

MC68HC05F5

Addendum to
MC68HC05F5
HCMOS Microcontroller Unit
Technical Data

This addendum adds information to *MC68HC05F5 Technical Data* (Motorola document number MC68HC05F5/D) as follows:

Page 1-1, **SECTION 1 GENERAL DESCRIPTION**, the following data replaces the second paragraph:

From: On-chip memory of the MC68HC05F5 includes 5632 bytes of user ROM and 224 bytes of user RAM.

To: On-chip memory of the MC68HC05F5 includes 5744 bytes of user ROM and 224 bytes of user RAM.

Page 1-1, **1.1 Features**, the following data replaces the third and eighth bulleted MCU features:

From: 5632 Bytes of User ROM including 8 Locations for User Vectors

To: 5744 Bytes of User ROM including 12 Locations for User Vectors

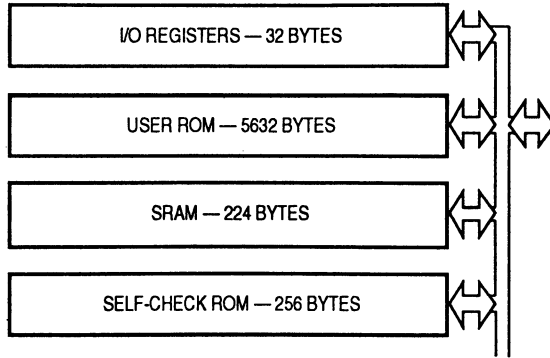
From: Fully Static Operation with no Minimum Clock Speed

To: Fully Static Operation with no Minimum Clock Speed (**Digital Section Only**)

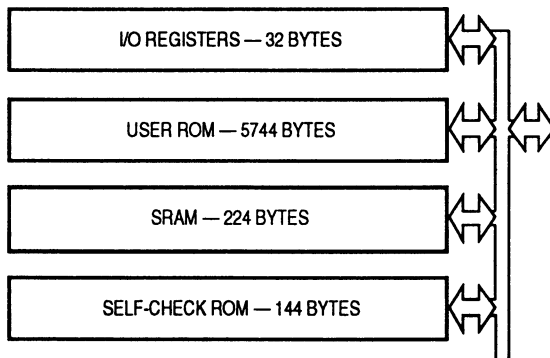
Specifications and information herein are subject to change without notice.

Page 1-3, Figure 1-1. MC68HC05F5 Block Diagram, correct as follows:

From:

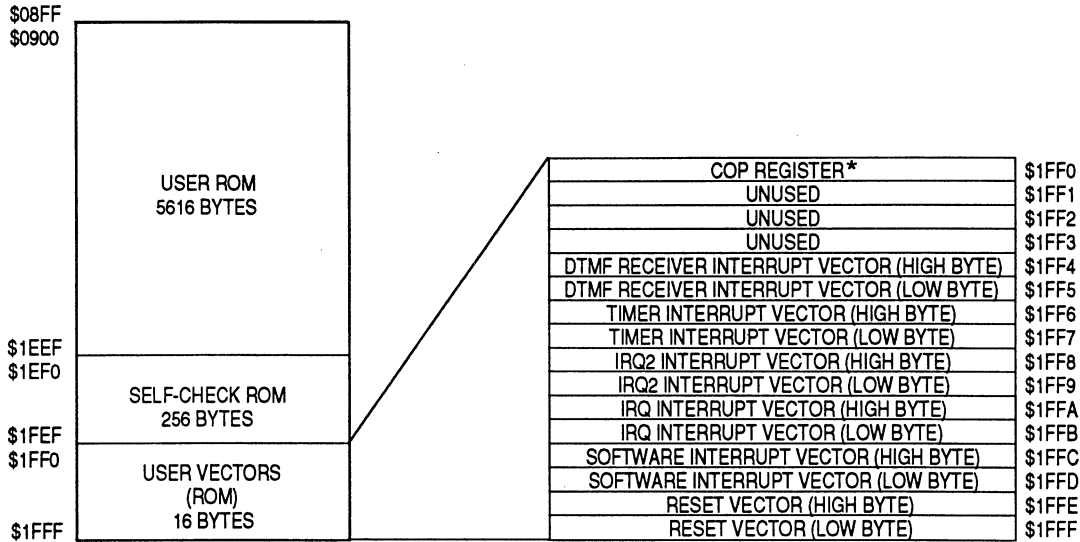


To:

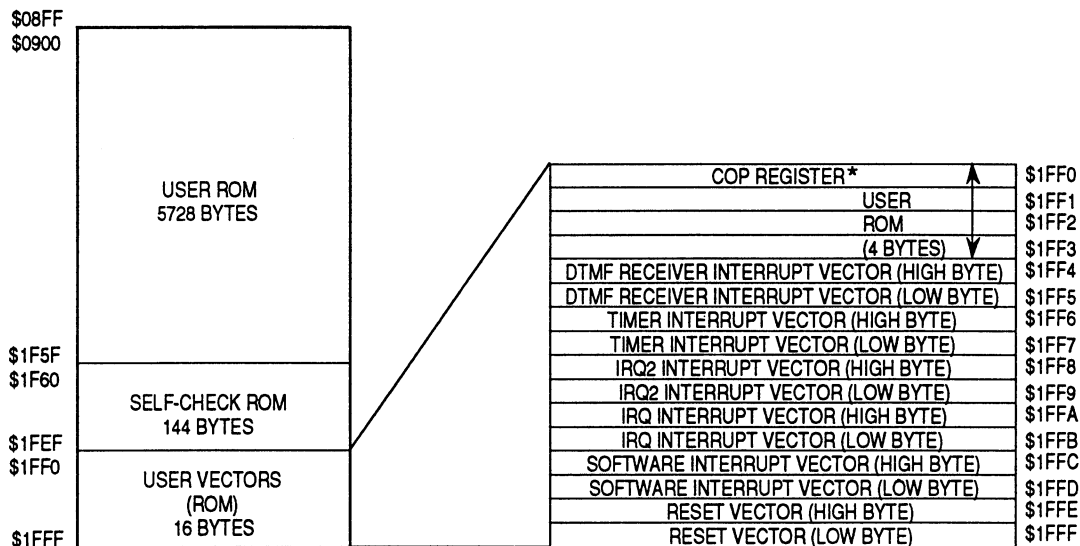


Page 2-2, Figure 2-1. Memory Map, correct as follows:

From:



To:



Page 2-4, **2.4 ROM**, correct as follows:

From:

The memory map includes the following three ROM sections:

- \$0900–\$1EEF — 5616 bytes of user ROM
- \$1EF0–\$1FEF — 256 bytes reserved for self-check ROM
- \$1FF0–\$1FFF — 16 bytes reserved for interrupt and reset vectors.

To:

The memory map includes the following three ROM sections:

- \$0900–\$1F5F — 5616 bytes of user ROM
- \$1F60–\$1FEF — 144 bytes reserved for self-check ROM
- \$1FF0–\$1FFF — 16 bytes reserved for interrupt and reset vectors.

Pages 8-2 to 8-3, 8.1 Timer Status and Control Register (TSCR), correct as follows:

From:

	Bit 7	6	5	4	3	2	1	Bit 0
	TOF	RTIF	TOIE	RTIE	TOFR	RTIFR	RT1	RT0

RESET: 0 0 0 0 U U 1 1

To:

	Bit 7	6	5	4	3	2	1	Bit 0
	TOF	RTIF	TOIE	RTIE	0	0	RT1	RT0

RESET: 0 0 0 0 — — 1 1

From:

TOF — Timer Overflow Flag
Clear TOF by writing a logic one to the TOFR bit.

To:

TOF — Timer Overflow Flag
Clear TOF by writing a logic zero to the TOF bit.

From:

RTIF — Real-Time Interrupt Flag
Clear RTIF by writing a logic one to the RTIFR bit.

To:

RTIF — Real-Time Interrupt Flag
Clear RTIF by writing a logic zero to the RTIF bit.

From:

TOFR — Timer Overflow Flag Reset
Writing a logic one to this write-only bit clears the TOF bit. TOFR always reads as logic zero.

To: [DELETED]

From:

RTIFR — Real-Time Interrupt Flag Reset
Setting this write-only bit clears the RTIF bit. RTIFR always reads as logic zero.

To: [DELETED]

Page 9-1, **9.1 DTMF Receiver Operation**, add the following note after **Figure 9-1. DTMF Keypad**:

NOTE

The DTMF receiver is designed to operate at internal bus speeds of 2.0 MHz **only**. The CLK bit in the DTMF Receiver Control Register (see **Figure 9-5. DTMF Receiver Control Register (DCR)**) is a provision for future digital bus speeds of 4.0 MHz.

Page 10-1, **10.1 Self-Check Tests**, correct as follows:

From:

To check for proper MCU operation, the self-check ROM performs the following tests:

- I/O test — A functional exercise of ports A, B, C, and D
- RAM test — A complement test of each RAM byte
- Timer test — A test of the counter register and the TOF and RTIF flags
- ROM test — An exclusive OR odd parity check
- DTMF test — A test of DTMF digital logic
- Interrupt test — A test of external and timer interrupts

To:

To check for proper MCU operation, the self-check ROM performs the following tests:

- RAM test — A complement test of each RAM byte
- ROM test — An exclusive OR odd parity check
- DTMF test — A test of DTMF digital logic
- Interrupt test — A test of external and timer interrupts

Page 10-1, 10.2 Self-Check Results, correct Table 10-1 as follows:

From:

Table 10-1. Self-Check Circuit LED Codes

PC3	PC2	PC1	PC0	Problem
ON	ON	ON	OFF	I/O FAILURE
ON	ON	OFF	ON	RAM FAILURE
ON	ON	OFF	OFF	TIMER FAILURE
ON	OFF	ON	ON	ROM FAILURE
ON	OFF	ON	OFF	DTMF LOGIC FAILURE
ON	OFF	OFF	ON	INTERRUPT FAILURE
ON	Flashing			NO FAILURES
All Others				DEVICE FAILURE

NOTES:

1. With no DTMF signal applied to the A_{IN} pin, the LEDs display the self-check code continuously.
2. With a DTMF signal applied to the A_{IN} pin, the LEDs periodically pause the self-check code display to display the DTMF receiver data code for about one second. (See Table 9-1.)

To:

Table 10-1. Self-Check Circuit LED Codes

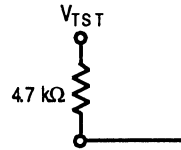
PC3	PC2	PC1	PC0	Problem
ON	ON	ON	OFF	RAM FAILURE
ON	ON	OFF	ON	ROM FAILURE
ON	ON	OFF	OFF	DTMF LOGIC FAILURE
ON	OFF	ON	ON	INTERRUPT FAILURE
ON	Flashing			NO FAILURES
All Others				DEVICE FAILURE

NOTES:

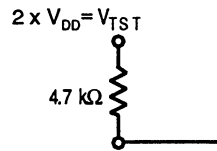
1. With no DTMF signal applied to the A_{IN} pin, the LEDs display the self-check code continuously.
2. With a DTMF signal applied to the A_{IN} pin, the LEDs periodically pause the self-check code display to display the DTMF receiver data code for about one second. (See Table 9-1.)

Page 10-3, 10.3 Self-Check Circuit, correct as follows:

From:



To:



From:

1. Apply V_{TST} to the \overline{TRQ} pin.

To:

1. Apply $V_{TST} = 2 \times V_{DD}$ to the \overline{TRQ} pin.

Freescale Semiconductor, Inc.

Page 12-3, Table 12-3. DC Electrical Characteristics ($V_{DD} = 5.0 \text{ Vdc}$) contains new values for the supply current:

From:

Supply Current (See NOTES.)						
Run	I_{DD}	—	1.8	TBD	mA	
Wait		—	550	TBD	μA	
Stop		—				
25 °C		—	2	TBD	μA	
0 to +70 °C (Standard)		—	4	TBD	μA	
-40 to +85 °C (Extended)		—	5	TBD	μA	

To:

Supply Current (See NOTES.)						
Run	I_{DD}	—	1.8	5	mA	
Wait		—	0.5	2	mA	
Stop		—				
25 °C		—	2	5	μA	
0 to +70 °C (Standard)		—	4	9	μA	
-40 to +85 °C (Extended)		—	5	10	μA	

Page 12-3, Table 12-3. DC Electrical Characteristics ($V_{DD} = 5.0 \text{ Vdc}$) contains new values for the analog supply current:

From:

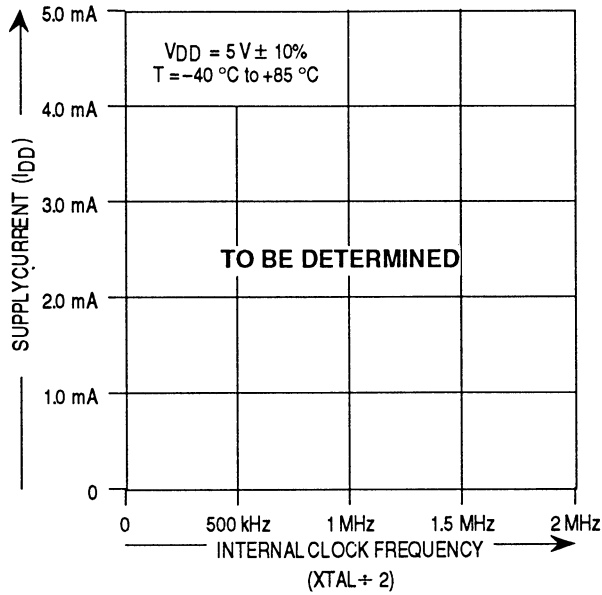
Analog Supply Current	A_{IDD}				
25 °C		—	5	—	mA
-40 to +85 °C	—	5.5	—	mA	

To:

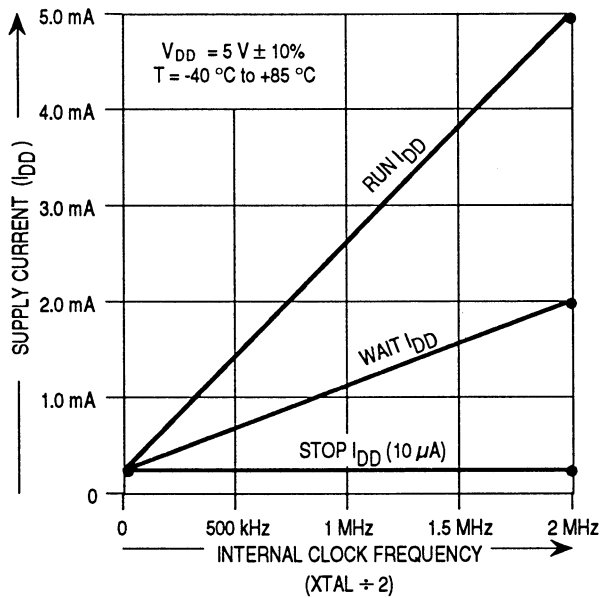
Analog Supply Current	A_{IDD}				
25 °C		—	5	6	mA
-40 to +85 °C	—	5.5	6.5	mA	

Page 12-5, Figure 12-5. Maximum Supply Current vs Clock Frequency, correct as follows:

From:



To:



Page 12-6, Table 12-4. Analog Characteristics, correct as follows:

From:

Characteristic	Min	Typ	Max	Unit
Signal Level for Detection, A_{IN} (NOTE 2)	-35	—	-2	dBm
Twist (High Tone/Low Tone)	-10	—	10	dB
Frequency Detect Bandwidth (NOTES 3, 4)	+(1.5 + 2 Hz)	± 2.3	—	% of F_0
60 Hz Tolerance	—	—	0.8	V rms
Dial Tone Tolerance (Dial Tone 330+440; NOTE 5)	—	—	0	dB
Noise Tolerance (NOTES 5, 6, 7)	—	—	-12	dB
Power Supply Noise (Wide Band)	—	—	TBD	mV p-p
Talk Off (NOTE 7)	—	TBD	—	Hits

NOTES:

- $V_{DD} = 5.0 \text{ Vdc} \pm 10\%$; $V_{SS} = 0 \text{ Vdc}$; $T_a = -40 \text{ }^\circ\text{C}$ to $+85 \text{ }^\circ\text{C}$ unless otherwise noted.
- $Z = 600 \text{ } \Omega$.
- F_0 is the center frequency of the bandpass filters.
- Referenced to lower amplitude tone.
- Bandwidth limited (0 to 3.4 kHz) Gaussian noise.
- Using Mitel Tape #CM7290.

To:

Characteristic	Min	Typ	Max	Unit
Signal Level for Detection, A_{IN} (NOTE 2)	-32	—	-2	dBm
Twist (High Tone/Low Tone) (NOTE 4)	-10	—	10	dB
Frequency Detect Bandwidth (NOTE 3)	+(1.5 + 2 Hz)	± 2.3	—	% of F_0
60 Hz Tolerance	—	—	0.8	V rms
Dial Tone Tolerance (Dial Tone 330+440; NOTE 5)	—	—	0	dB
Noise Tolerance (NOTES 4, 5, 6)	—	—	-12	dBc
Talk Off (NOTE 6)	—	TBD	—	Hits

NOTES:

- $V_{DD} = 5.0 \text{ Vdc} \pm 10\%$; $V_{SS} = 0 \text{ Vdc}$; $f_{OSC} = 4.0 \text{ MHz}$; $T_a = -40 \text{ }^\circ\text{C}$ to $+85 \text{ }^\circ\text{C}$ unless otherwise noted.
- $Z = 600 \text{ } \Omega$.
- F_0 is the center frequency of the bandpass filters.
- Referenced to lower amplitude tone.
- Bandwidth limited (0 to 3.4 kHz) Gaussian noise.
- Using Mitel Tape #CM7290.

Page 12-7, Table 12-5. DTMF Receiver Timing, correct as follows:

From:

Receiver Propagation Delay	t_{PROP}	—	TBD	—	ms
----------------------------	------------	---	-----	---	----

NOTE: $V_{DD} = 5.0 \text{ Vdc} \pm 10\%$; $V_{SS} = 0 \text{ Vdc}$; $T_A = -40 \text{ }^\circ\text{C}$ to $+85 \text{ }^\circ\text{C}$ unless otherwise noted.

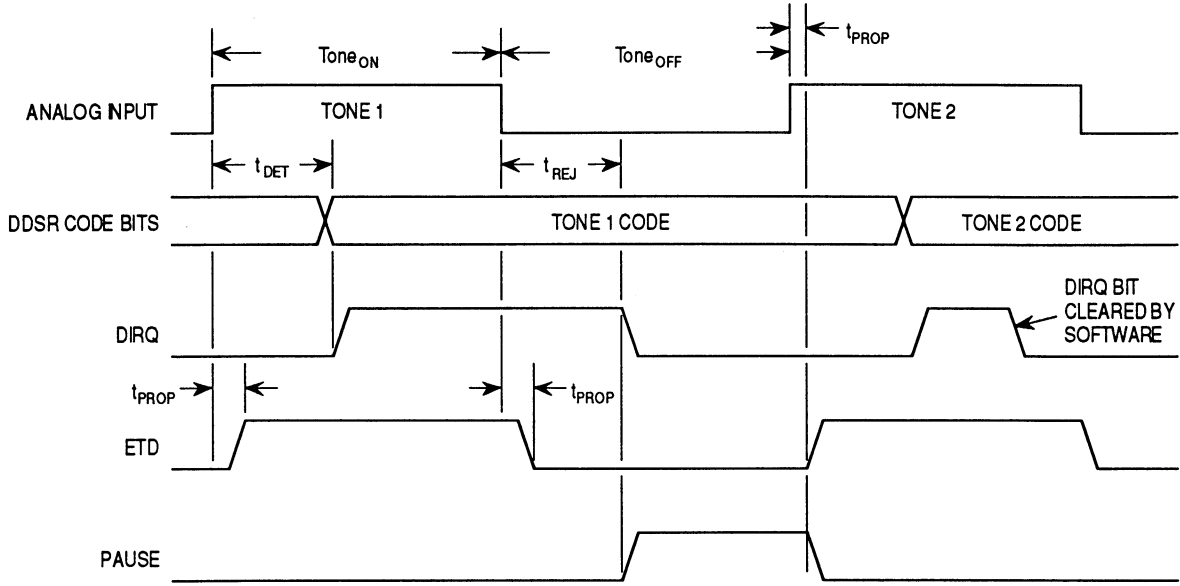
To:

Receiver Propagation Delay	t_{PROP}	—	12	—	ms
----------------------------	------------	---	----	---	----

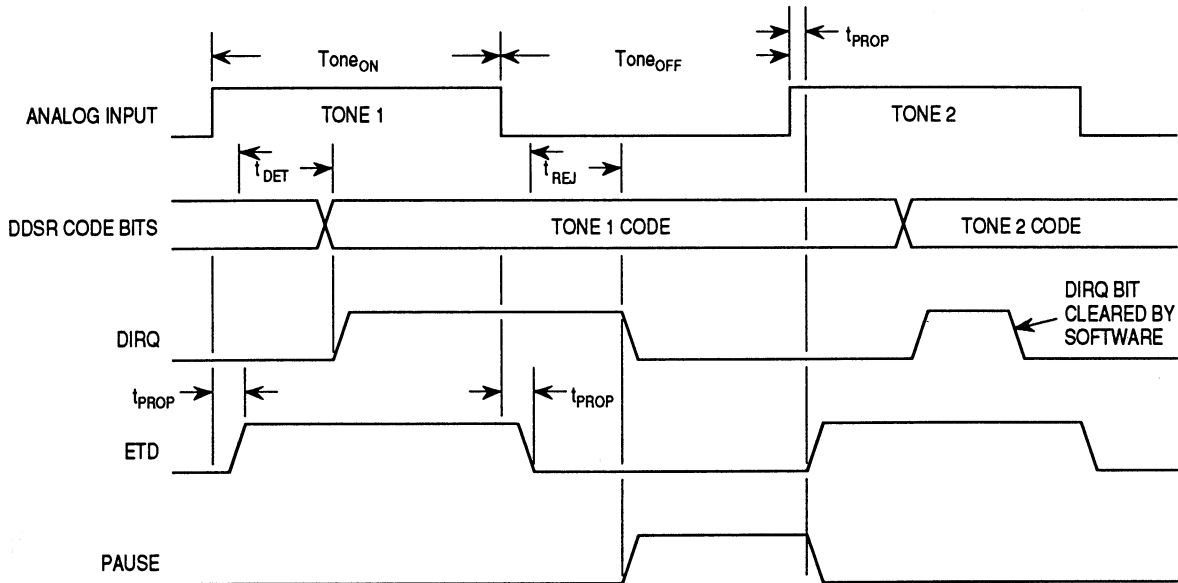
NOTE: $V_{DD} = 5.0 \text{ Vdc} \pm 10\%$; $V_{SS} = 0 \text{ Vdc}$; $f_{OSC} = 4.0 \text{ MHz}$; $T_A = -40 \text{ }^\circ\text{C}$ to $+85 \text{ }^\circ\text{C}$ unless otherwise noted.

Page 12-7, Figure 12-7. DTMF Receiver Timing, correct as follows:

From:



To:



Freescale Semiconductor, Inc.

Home Page:

www.freescale.com

email:

support@freescale.com

USA/Europe or Locations Not Listed:

Freescale Semiconductor
Technical Information Center, CH370
1300 N. Alma School Road
Chandler, Arizona 85224
(800) 521-6274
480-768-2130

support@freescale.com

Europe, Middle East, and Africa:

Freescale Halbleiter Deutschland GmbH
Technical Information Center
Schatzbogen 7
81829 Muenchen, Germany
+44 1296 380 456 (English)
+46 8 52200080 (English)
+49 89 92103 559 (German)
+33 1 69 35 48 48 (French)
support@freescale.com

Japan:

Freescale Semiconductor Japan Ltd.
Headquarters
ARCO Tower 15F
1-8-1, Shimo-Meguro, Meguro-ku
Tokyo 153-0064, Japan
0120 191014
+81 2666 8080
support.japan@freescale.com

Asia/Pacific:

Freescale Semiconductor Hong Kong Ltd.
Technical Information Center
2 Dai King Street
Tai Po Industrial Estate,
Tai Po, N.T., Hong Kong
+800 2666 8080
support.asia@freescale.com

For Literature Requests Only:

Freescale Semiconductor
Literature Distribution Center
P.O. Box 5405
Denver, Colorado 80217
(800) 441-2447
303-675-2140
Fax: 303-675-2150
LDCForFreescaleSemiconductor@hibbertgroup.com

RoHS-compliant and/or Pb- free versions of Freescale products have the functionality and electrical characteristics of their non-RoHS-compliant and/or non-Pb- free counterparts. For further information, see <http://www.freescale.com> or contact your Freescale sales representative.

For information on Freescale's Environmental Products program, go to <http://www.freescale.com/epp>.

Information in this document is provided solely to enable system and software implementers to use Freescale Semiconductor products. There are no express or implied copyright licenses granted hereunder to design or fabricate any integrated circuits or integrated circuits based on the information in this document. Freescale Semiconductor reserves the right to make changes without further notice to any products herein. Freescale Semiconductor makes no warranty, representation or guarantee regarding the suitability of its products for any particular purpose, nor does Freescale Semiconductor assume any liability arising out of the application or use of any product or circuit, and specifically disclaims any and all liability, including without limitation consequential or incidental damages. "Typical" parameters which may be provided in Freescale Semiconductor data sheets and/or specifications can and do vary in different applications and actual performance may vary over time. All operating parameters, including "Typicals" must be validated for each customer application by customer's technical experts. Freescale Semiconductor does not convey any license under its patent rights nor the rights of others. Freescale Semiconductor products are not designed, intended, or authorized for use as components in systems intended for surgical implant into the body, or other applications intended to support or sustain life, or for any other application in which the failure of the Freescale Semiconductor product could create a situation where personal injury or death may occur. Should Buyer purchase or use Freescale Semiconductor products for any such unintended or unauthorized application, Buyer shall indemnify and hold Freescale Semiconductor and its officers, employees, subsidiaries, affiliates, and distributors harmless against all claims, costs, damages, and expenses, and reasonable attorney fees arising out of, directly or indirectly, any claim of personal injury or death associated with such unintended or unauthorized use, even if such claim alleges that Freescale Semiconductor was negligent regarding the design or manufacture of the part.



**For More Information On This Product,
Go to: www.freescale.com**

MOTOROLA
SEMICONDUCTOR
TECHNICAL DATA

MC68HC05F5

Addendum to
MC68HC05F5
HCMOS Microcontroller Unit
Technical Data

This addendum adds information to *MC68HC05F5 Technical Data* (Motorola document number MC68HC05F5/D) as follows:

Page 1-1, **SECTION 1 GENERAL DESCRIPTION**, the following data replaces the second paragraph:

From: On-chip memory of the MC68HC05F5 includes 5632 bytes of user ROM and 224 bytes of user RAM.

To: On-chip memory of the MC68HC05F5 includes 5744 bytes of user ROM and 224 bytes of user RAM.

Page 1-1, **1.1 Features**, the following data replaces the third and eighth bulleted MCU features:

From: 5632 Bytes of User ROM including 8 Locations for User Vectors

To: 5744 Bytes of User ROM including 12 Locations for User Vectors

From: Fully Static Operation with no Minimum Clock Speed

To: Fully Static Operation with no Minimum Clock Speed (**Digital Section Only**)